

# TireHand® **TH1449A**

Technical Specifications

Tire Manipulator



An Oshkosh Truck Corporation Company

# TireHand® 1449A

## Specifications

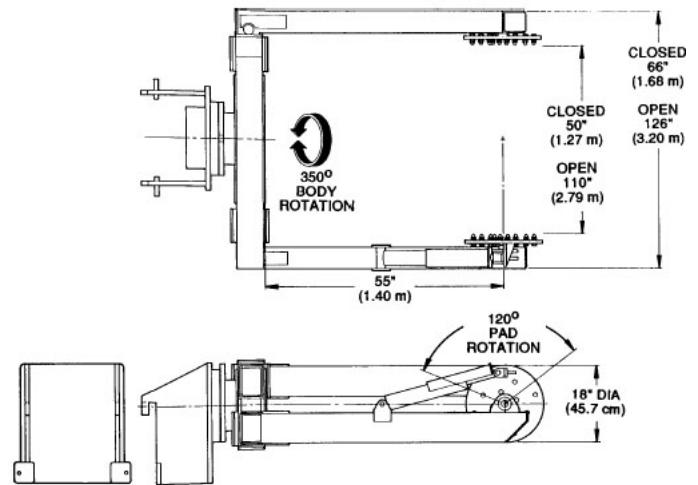
<b>Tire Size Capacity</b>	18.00-25 – 37.5-39
<b>Max. Capacity</b>	4200 lb (1905 kg)
<b>Clamping Span</b>	50 – 113" (127 – 279.4 cm)
<b>Method of Clamping</b>	Horizontal, telescoping
<b>Clamping Pad Rotation</b>	120° (2.09 rad)
<b>Body Rotation</b>	350° (6.11 rad)
<b>Side Shift</b>	Standard on loader, optional on forklift
Standard on loader, optional on forklift	8" (20.32 cm) lateral movement
<b>Clamping Load Holding Valves</b>	Counterbalance valve
<b>Hydraulic Controls</b>	
Manual lever	Control valve on carrier vehicle
Electric switch	Control valve on TireHand body
<b>Rotation System</b>	Spur gear drive
<b>Weight</b>	2020 lb (916.3 kg)
<b>Optimum Pump Capacity</b>	5 gpm @ 2300 psi (18.9 L/min @ 158.6 bar)
<b>Counterweight Needed</b>	As required for stabilization
<b>Horizontal Center of Gravity</b>	
From vehicle attachment point	28" (71.1 cm)
With 37.5 – 39 tire	62" (157.5 cm)

## Manufacturer's Limited Warranty Coverage

Products manufactured by IMT are warranted to be free from defects in material and workmanship under proper use, application, and maintenance in accordance with IMT written recommendations, instructions, and specifications as follows:

1. 90 days labor on IMT workmanship from the date of shipment to the end user.
2. One year on original IMT parts from the date of shipment to the end user.

## Geometric Configurations



## Vehicle Compatibility

The TireHand 1449A will permanently attach to either a forklift truck or a front-end loader. When mounting to a forklift truck, we recommend equipping the truck with a side-shifter. If used with a front-end loader, quick couplers should be used to enable the TireHand to be disconnected, so the original bucket can be attached quickly to the machine for normal operations.

**Note:** Where applicable, specifications are in accordance with SAE standards.



An Oshkosh Truck Corporation Company

## Iowa Mold Tooling Co., Inc.

500 Highway 18 West • P.O. Box 189 • Garner, Iowa 50438-0189  
641-923-3711 • Fax: 641-923-6063 • www.imt.com

**800-247-5958**

IMT reserves the right to make changes in engineering, design, and specifications; add improvements; or discontinue manufacturing at any time without notice or obligation.

IMT, IMT LOGO, and TIREHAND are registered trademarks or trademarks of Iowa Mold Tooling Co., Inc., Garner, IA, USA.

© 2007 Iowa Mold Tooling Co., Inc. All Rights Reserved.